

BORDERTEC BOS

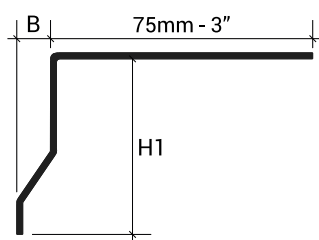
PRODUCT DESCRIPTION



Perimeter profile that finishes and protects the exposed concrete edge of balconies and terraces incorporating an upper edging trim designed to frame the tiled surface when laid flush with the mortar screed.

TECHNICAL FEATURES

Length: 2,70 meters



Stainless Steel - Aluminum

B = 11.4 mm

MATERIAL DESCRIPTION

Stainless Steel

Steel profiles are made by cold forming sheets of constant thickness, thus differing from the corresponding aluminum and brass versions made by hot extrusion, while maintaining their application and dimensional characteristics. Stainless steel effectively resists high mechanical stress and is particularly suitable for use in the chemical, food, and hospital sectors, where hygiene, durability, and chemical resistance are essential. Normally produced with a semi-gloss finish, a brushed finish can also be achieved by partially removing material using rotating nylon and quartz fiber brushes. This process gives the surface a matte appearance without altering its characteristics.

AISI 304 STAINLESS STEEL - EN X 5 CrNi 18 10 - DIN 1.4301:

This steel belongs to the AUSTENITIC category and is the most widespread and commonly used alloy for products requiring high technical and performance characteristics. It is highly resistant to most chemical agents but may stain or darken superficially; a standard polishing product is sufficient to restore its original appearance.



IL

bordertec >> BOS in Stainless Steel Polished AISI 304 - DIN 1.4301		
Item	H1 mm	Finish
BOS42IL270	42	IL - Polished
BOS55IL270	55	IL - Polished
BOS75IL270	75	IL - Polished
BOS95IL270	95	IL - Polished

bordertec >> BOSE External corner in Stainless Steel AISI 304 - DIN 1.4301		
Item	H1 mm	Finish
BOSE42IL	42	IL - Polished
BOSE55IL	55	IL - Polished
BOSE75IL	75	IL - Polished
BOSE95IL	95	IL - Polished

bordertec >> BOSG Joint in Stainless Steel AISI 304 - DIN 1.4301		
Item	H1 mm	Finish
BOSG42IL	42	IL - Polished
BOSG55IL	55	IL - Polished
BOSG75IL	75	IL - Polished
BOSG95IL	95	IL - Polished

MATERIAL DESCRIPTION

Aluminum

The primary aluminum alloy EN AW-6060 in T6 temper is suitable for complex extrusions, offering high strength and an excellent natural surface finish that lends itself well to subsequent finishing processes.

POWDER COATED ALUMINUM:

Powder coating begins with a chromium phosphate pre-treatment, followed by electrostatic application of polyester powders that offer high resistance to U.V. rays and atmospheric agents. The entire surface of the profile is coated with an average thickness of approximately 60 microns. A hot cross-linking polymerization process is then carried out to ensure maximum chemical and mechanical resistance.



A11



A22



A32



A62

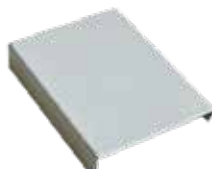


A63

ACCESSORIES



BOSE



BOSG



Profilitec S.p.A.
 Via Scotte, 3 - 36033 Isola Vicentina (Vicenza), ITALY
 Tel: +39 0444 268311
 e-mail: profilitec@profilitec.com

Profilitec Corp.
 e-mail: customerservice@profilitec.com

Profilitec Ibérica, S.L.U.
 e-mail: iberica@profilitec.com

Profilitec France
 e-mail: france@profilitec.com

bordertec >> BOS in Powder Coated Aluminum		
Item	H1 mm	Finish
BOS42A11270	42	A11 - Pure White
BOS55A11270	55	A11 - Pure White
BOS75A11270	75	A11 - Pure White
BOS95A11270	95	A11 - Pure White
BOS42A22270	42	A22 - Pastel Grey
BOS55A22270	55	A22 - Pastel Grey
BOS75A22270	75	A22 - Pastel Grey
BOS95A22270	95	A22 - Pastel Grey
BOS42A32270	42	A32 - Dark Beige
BOS55A32270	55	A32 - Dark Beige
BOS75A32270	75	A32 - Dark Beige
BOS95A32270	95	A32 - Dark Beige
BOS42A62270	42	A62 - Red Brown
BOS55A62270	55	A62 - Red Brown
BOS75A62270	75	A62 - Red Brown
BOS95A62270	95	A62 - Red Brown
BOS42A63270	42	A63 - Dark Brown
BOS55A63270	55	A63 - Dark Brown
BOS75A63270	75	A63 - Dark Brown
BOS95A63270	95	A63 - Dark Brown

bordertec >> BOSE External corner in Powder Coated Aluminum		
Item	H1 mm	Finish
BOSE42A11	42	A11 - Pure White
BOSE55A11	55	A11 - Pure White
BOSE75A11	75	A11 - Pure White
BOSE95A11	95	A11 - Pure White
BOSE42A22	42	A22 - Pastel Grey
BOSE55A22	55	A22 - Pastel Grey
BOSE75A22	75	A22 - Pastel Grey
BOSE95A22	95	A22 - Pastel Grey
BOSE42A32	42	A32 - Dark Beige
BOSE55A32	55	A32 - Dark Beige
BOSE75A32	75	A32 - Dark Beige
BOSE95A32	95	A32 - Dark Beige
BOSE42A62	42	A62 - Red Brown
BOSE55A62	55	A62 - Red Brown
BOSE75A62	75	A62 - Red Brown
BOSE95A62	95	A62 - Red Brown
BOSE42A63	42	A63 - Dark Brown
BOSE55A63	55	A63 - Dark Brown
BOSE75A63	75	A63 - Dark Brown
BOSE95A63	95	A63 - Dark Brown

bordertec >> BOSG Joint in Powder Coated Aluminum		
Item	H1 mm	Finish
BOSG42A11	42	A11 - Pure White
BOSG55A11	55	A11 - Pure White
BOSG75A11	75	A11 - Pure White
BOSG95A11	95	A11 - Pure White
BOSG42A22	42	A22 - Pastel Grey
BOSG55A22	55	A22 - Pastel Grey
BOSG75A22	75	A22 - Pastel Grey
BOSG95A22	95	A22 - Pastel Grey
BOSG42A32	42	A32 - Dark Beige
BOSG55A32	55	A32 - Dark Beige
BOSG75A32	75	A32 - Dark Beige
BOSG95A32	95	A32 - Dark Beige
BOSG42A62	42	A62 - Red Brown
BOSG55A62	55	A62 - Red Brown
BOSG75A62	75	A62 - Red Brown
BOSG95A62	95	A62 - Red Brown
BOSG42A63	42	A63 - Dark Brown
BOSG55A63	55	A63 - Dark Brown
BOSG75A63	75	A63 - Dark Brown
BOSG95A63	95	A63 - Dark Brown

APPLICATION

1. Choose the H-size profile corresponding to the thickness of the covering to be laid, taking care to ensure that the profile does not exceed the edge of the covering but is positioned 0.5 to 1 mm lower;
2. Cut to the desired length;
3. Fix the profiles to the screed with nails, taking care to separate them by at least 1 cm from the screed and taking care to leave at least 0.5 cm of space between adjacent profiles and mask that space with the joint;
4. Spread the adhesive in the profile application area with the help of a notched trowel;
5. Apply the desired waterproofing system (Balcotec System) where applicable;
6. Lay the flooring, taking care to leave a gap of about 5 mm between tile and profile.

N.B.: Aluminum profiles offer limited resistance to alkaline substances, so their use must be evaluated according to the expected chemical aggressions. Aluminum profiles in contact with cementitious substances can be attacked by corrosion processes, so residues of used adhesives and sealants should be removed immediately. When laying, the right amount of adhesive must be used and the right drying times observed, avoiding creating cavities in which water can stagnate, which would lead to the formation of alkaline substances (aluminum hydroxide) and trigger corrosive electrolytic phenomena.

CLEANING AND MAINTENANCE

STAINLESS STEEL:

Stainless steel is easy to clean and very hygienic because of its smooth, nonporous surface, which hinders the growth of bacteria. To keep it in good condition, simply wash it with warm soapy water, rinse it thoroughly and dry it with a soft cloth. If exposed to weathering, periodic cleaning is recommended to prevent corrosion. Brushed surfaces should be cleaned in the direction of brushing. In case of scratches, a specific polish can be used with a soft cloth.

Avoid cleaning agents containing hydrochloric acid, hydrofluoric acid or bleach, as well as abrasive products. Do not leave ordinary steel objects in contact with stainless steel to prevent contamination and rust stains. Also, do not leave damp patches or sponges on the surface to prevent water halos.

ALUMINIUM:

Aluminum requires no special maintenance.

For cleaning, use colorless alcohol diluted in water or neutral detergents, avoiding acidic ones (e.g., hydrochloric or hydrofluoric acid); use non-abrasive sponges or cloths to avoid damage. We recommend not applying cleaners directly to surfaces. After cleaning, rinse with water and dry immediately with a soft cloth. Avoid polishes. Quickly remove residual cement or grout to protect the surface.

WARNINGS

These profiles should be handled with care, using cut-resistant gloves. The indications and prescriptions herein, while corresponding to our experience, are to be considered purely indicative and must be confirmed by exhaustive practical applications. Profilitec declines any responsibility for any damage to people or things resulting from improper use of the products. The user is required to determine whether or not the product is suitable for use and assumes all responsibility arising from incorrect installation of the material.

BILL OF QUANTITIES ITEM

Supply and installation of profile in _____ (material), with finish _____
 _____ (see Material Description section) of characteristic size _____ mm, equipped with a
 perforated flap which guarantees perfect grip with the adhesive used.

Family type _____ from the Profilitec company as a painted aluminium perimeter profile suitable
 for laying terrace and balcony flooring, to be supplied and installed properly, following the methods and fields of application
 suggested by the manufacturer.

Profile length: 2700 mm

Profile SKU: _____

Material: _____ €/m

Installation: _____ €/m

Totale price: _____ €/m